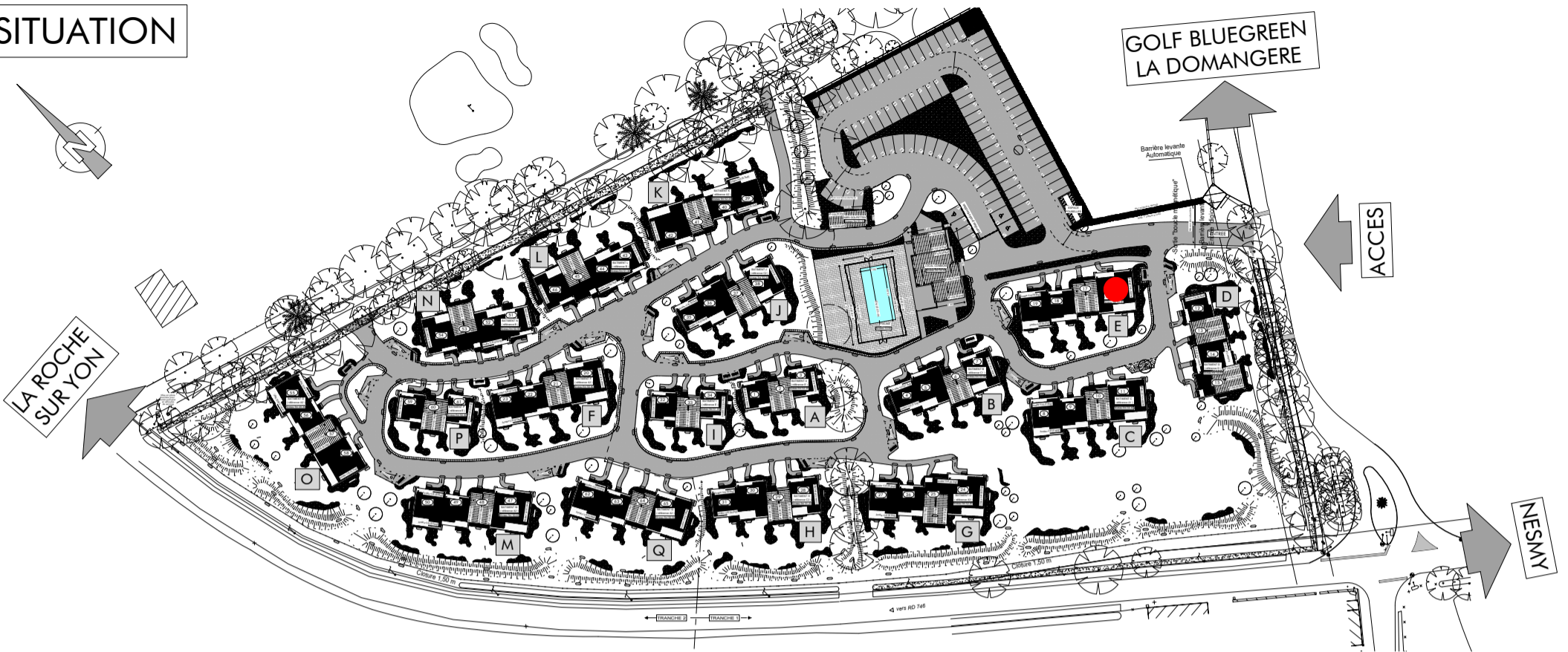
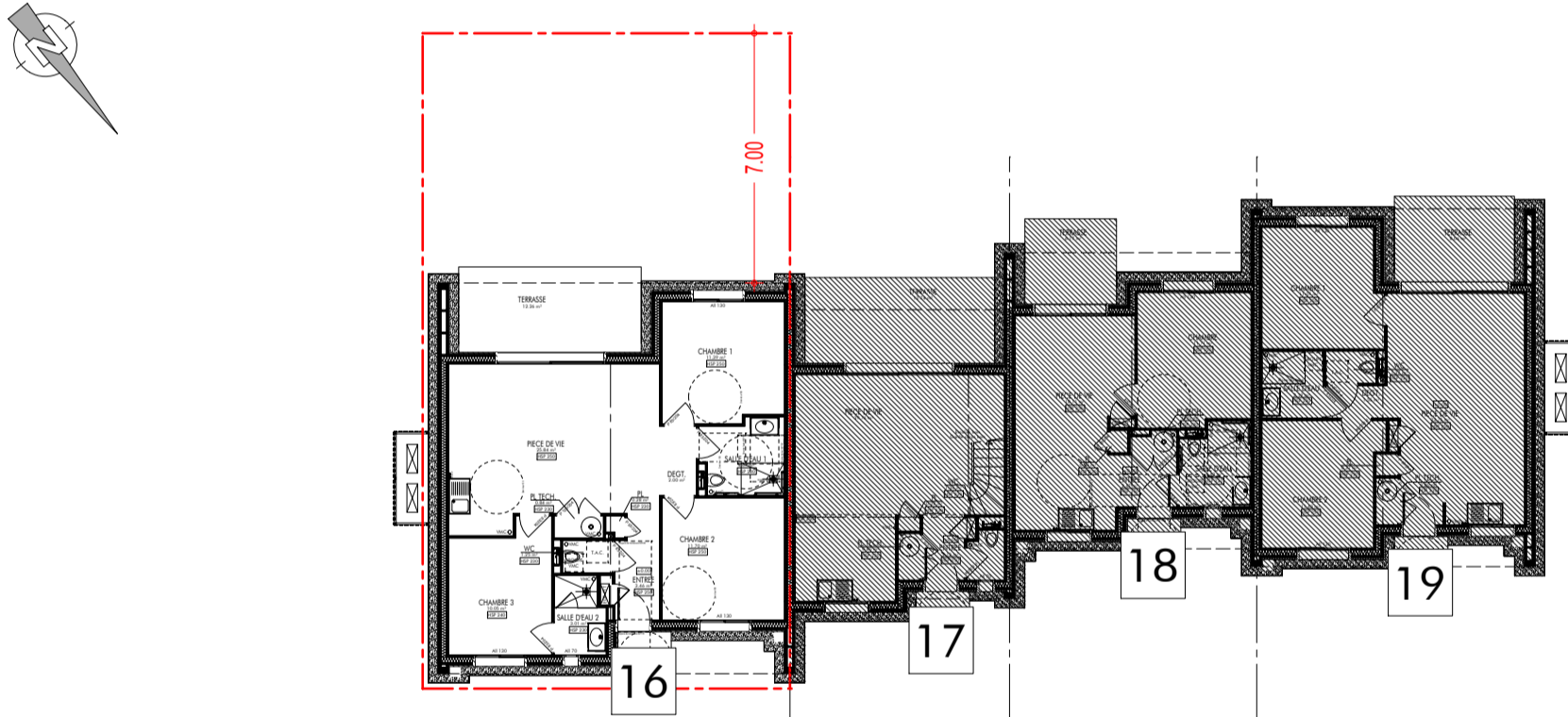


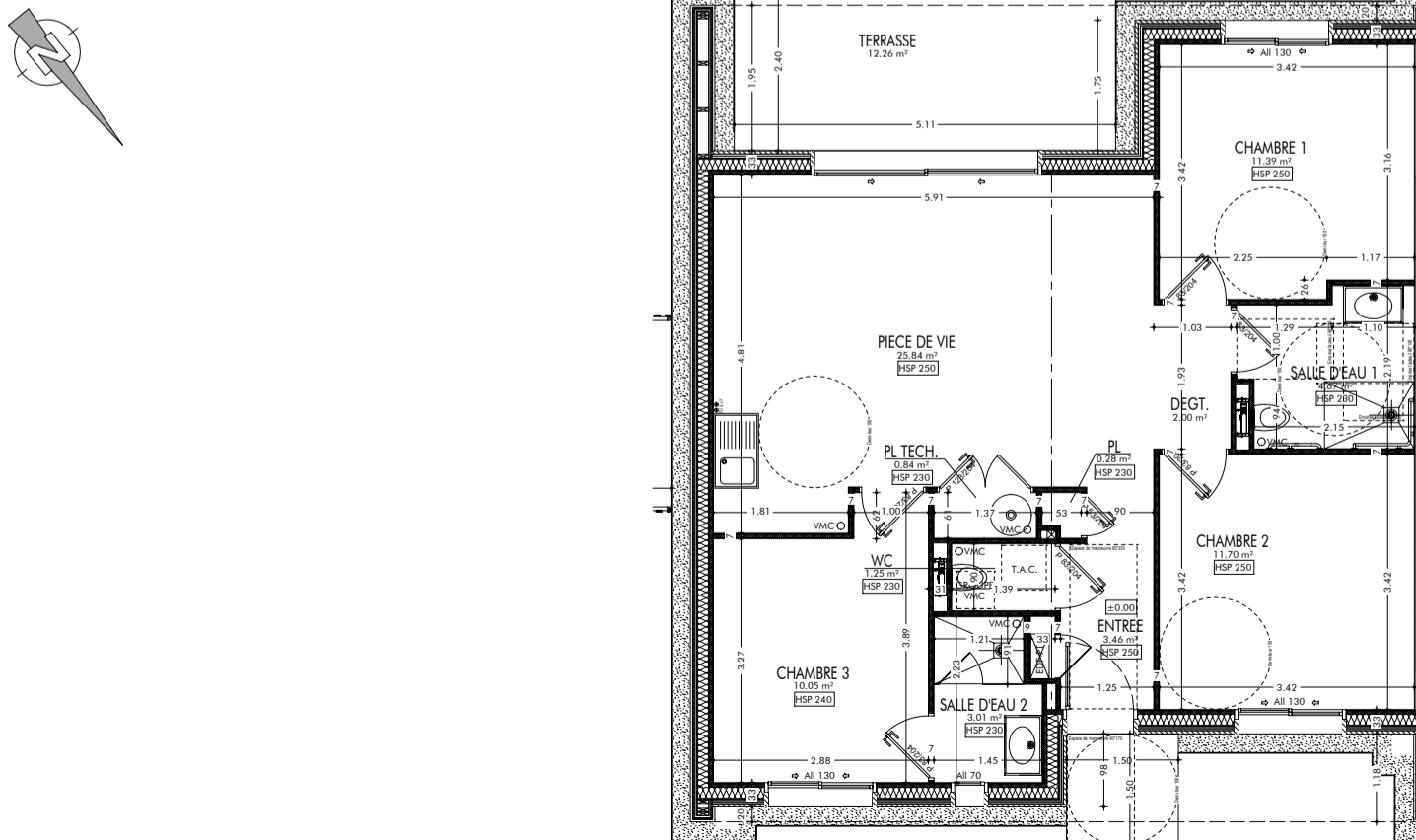
SITUATION



BATIMENT E



PLAN



REZ-DE-CHAUSSEE

SURFACES- T4 PMR	
PIECES	SURFACES
CHAMBRE 1	11.39 m ²
CHAMBRE 2	11.70 m ²
CHAMBRE 3	10.05 m ²
DEGT.	2.00 m ²
ENTREE	3.46 m ²
PIECE DE VIE	25.84 m ²
PL	0.28 m ²
PL TECH.	0.84 m ²
SALLE D'EAU 1	4.67 m ²
SALLE D'EAU 2	3.01 m ²
WC	1.25 m ²
TOTAL SURFACES	74.49 m²

TERRASSE	12.26 m ²
SURF. TERRAIN ARRIERE	69.10 m ²