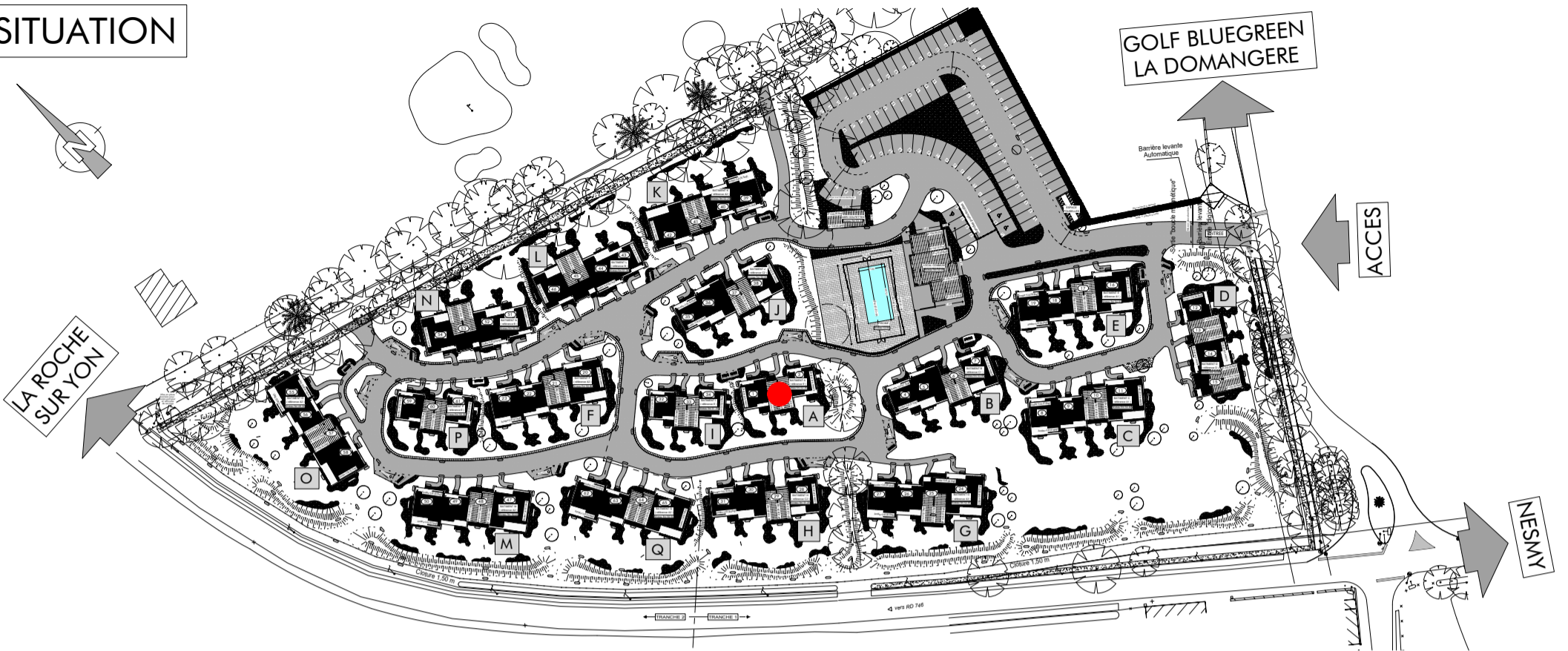
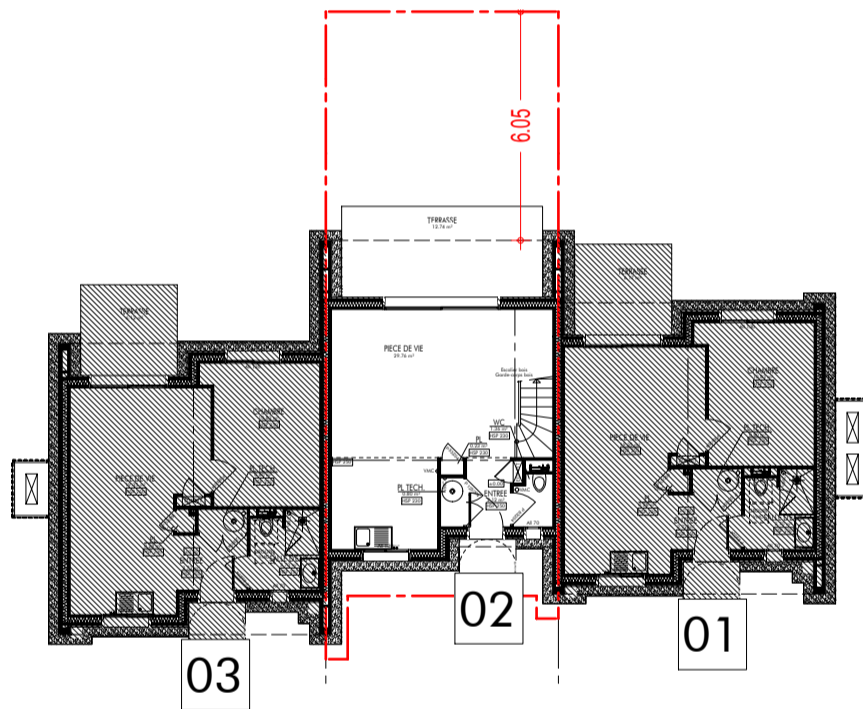


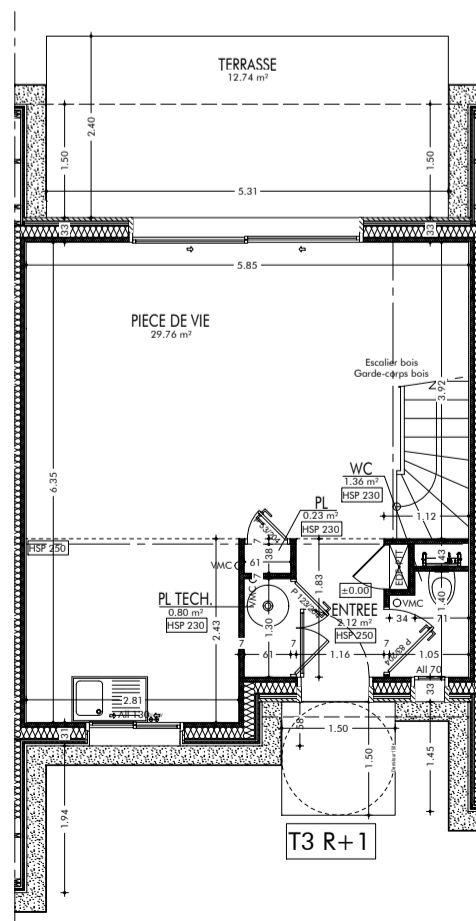
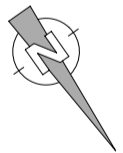
SITUATION



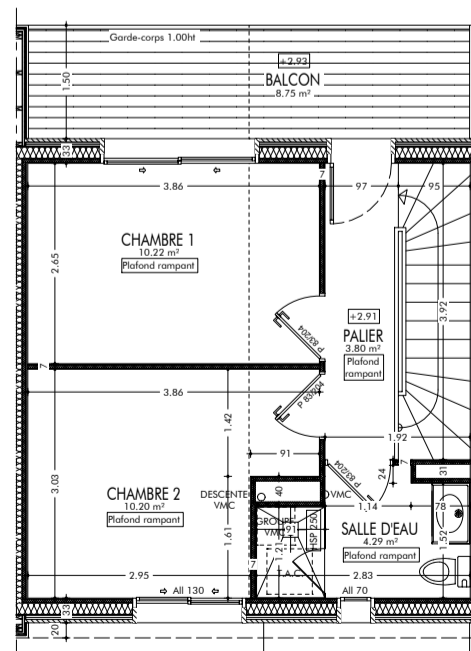
BATIMENT A



PLAN



REZ-DE-CHAUSSEE



ETAGE

| SURFACES - T3 R+1 | |
|-----------------------|----------------------------|
| PIECES | SURFACES |
| ENTREE | 2.12 m ² |
| PIECE DE VIE | 29.76 m ² |
| PL | 0.23 m ² |
| PL TECH. | 0.80 m ² |
| WC | 1.36 m ² |
| TOTAL RDC | 34.27 m² |
| CHAMBRE 1 | 10.22 m ² |
| CHAMBRE 2 | 10.20 m ² |
| PALIER | 3.80 m ² |
| SALLE D'EAU | 4.29 m ² |
| TOTAL R+1 | 28.51 m² |
| TOTAL SURFACES | 62.78 m² |

| | |
|------------------------------|----------------------------|
| TERRASSE | 12.74 m ² |
| BALCON | 8.75 m ² |
| SURF. TERRAIN ARRIERE | 32.20 m² |