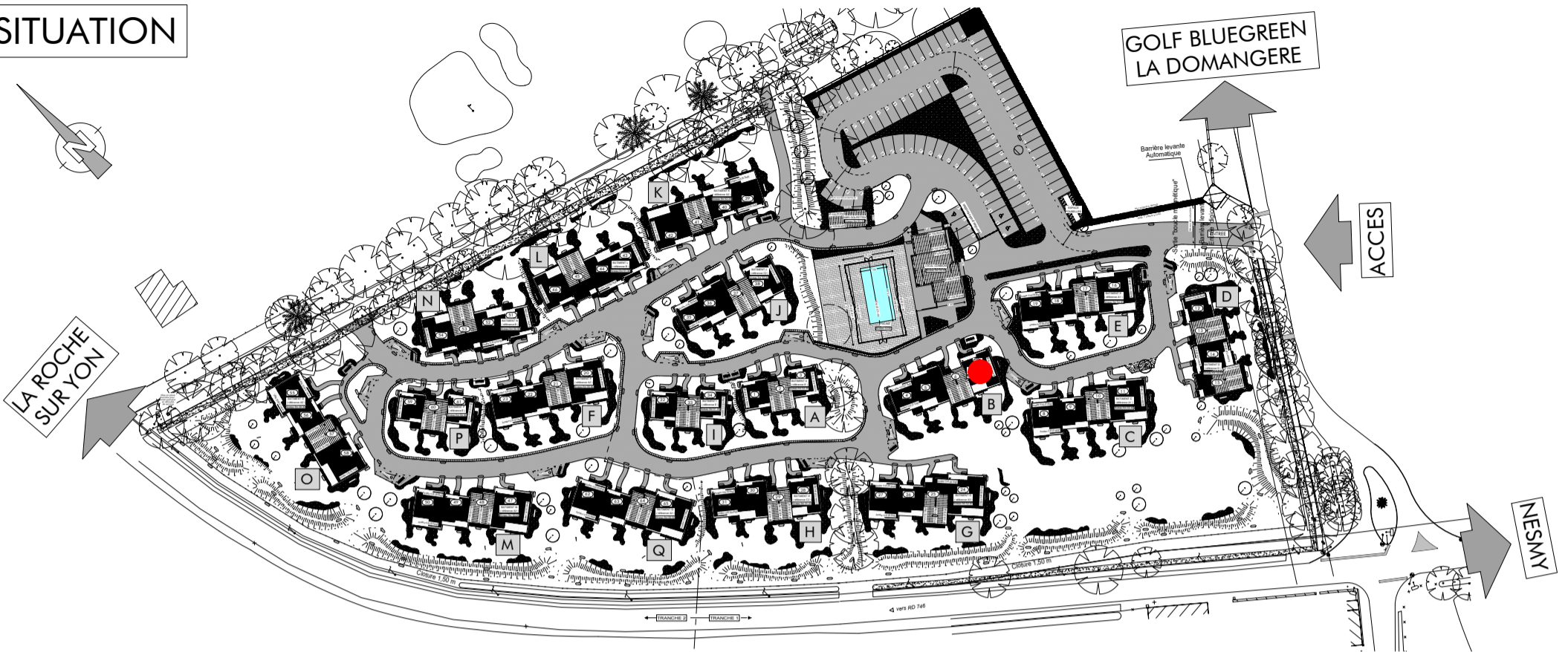
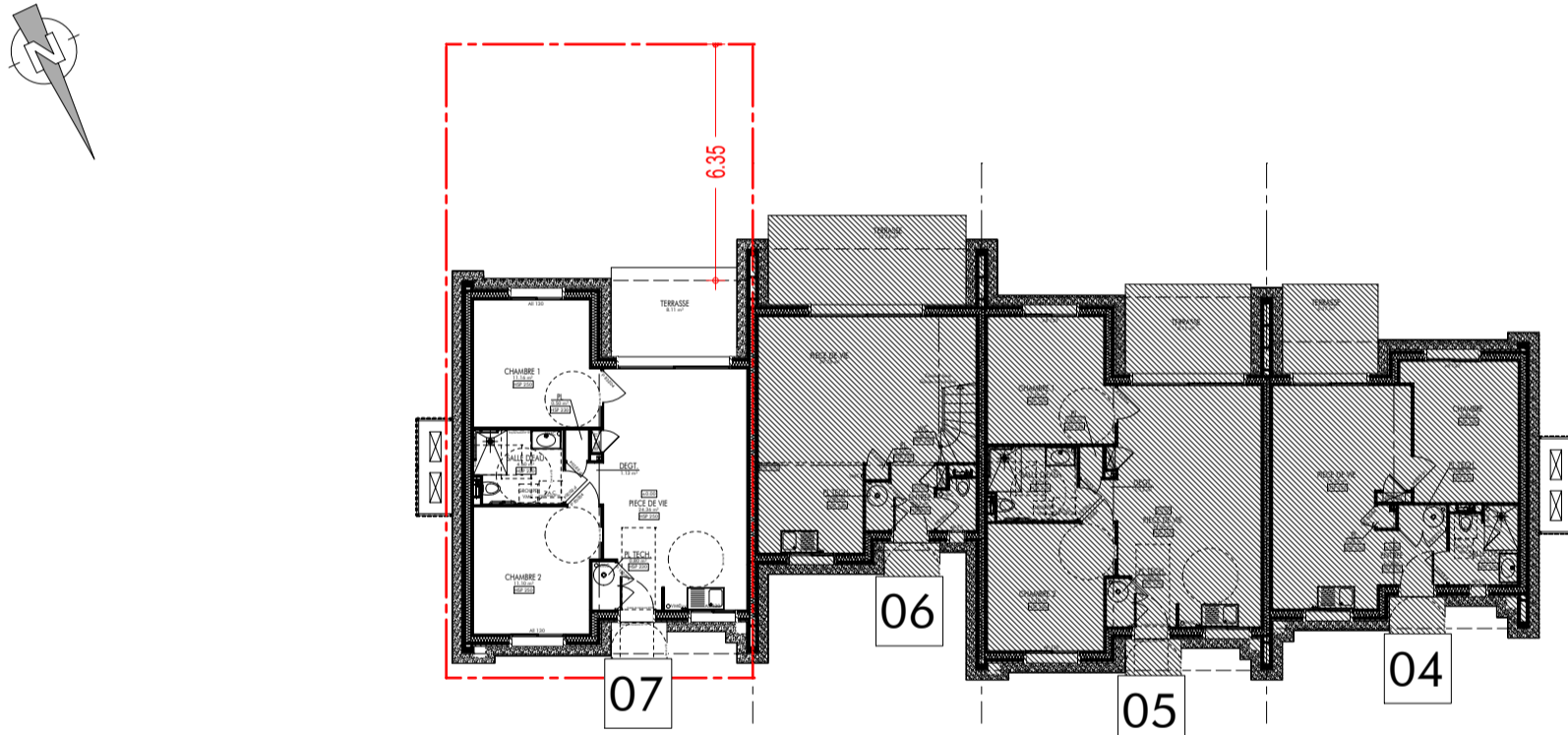


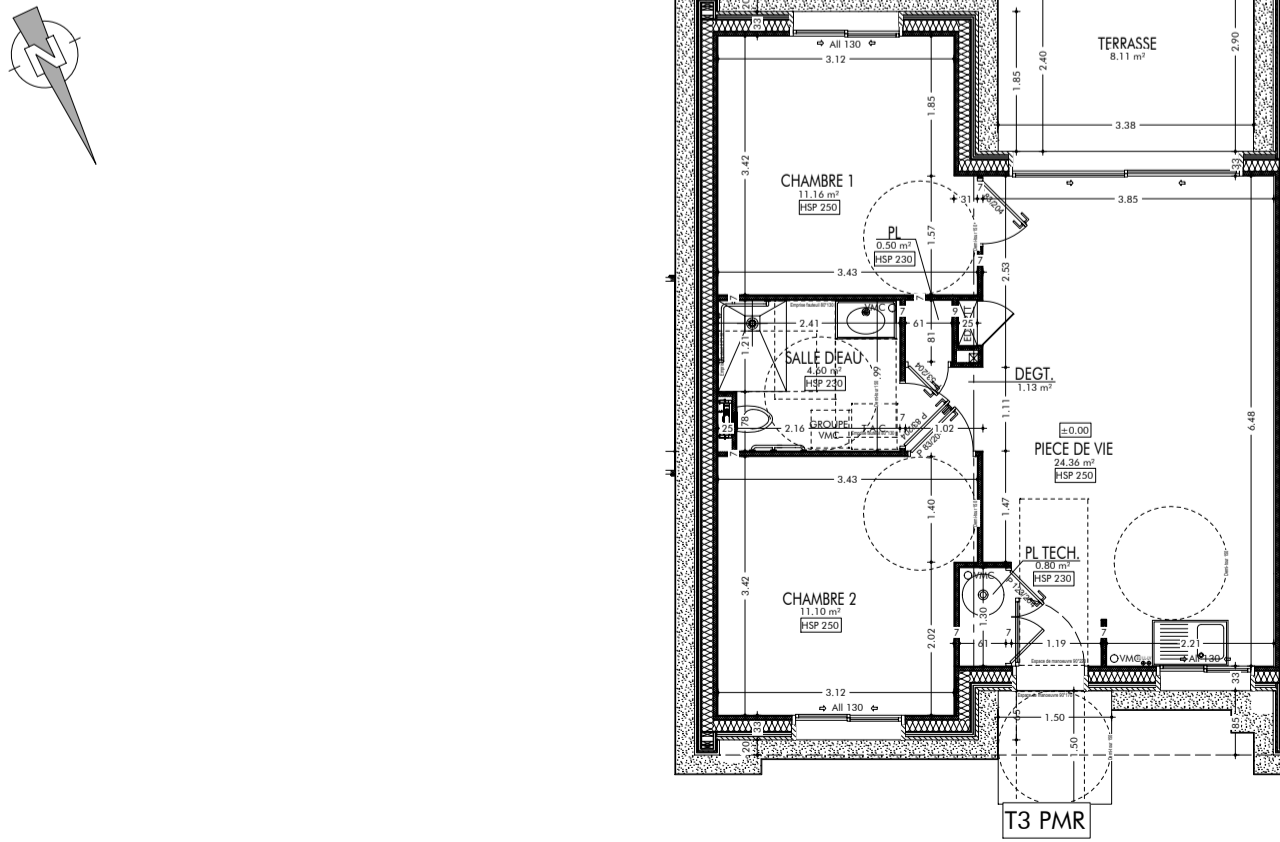
SITUATION



BATIMENT B



PLAN



SURFACES - T3 PMR	
PIECES	SURFACES
CHAMBRE 1	11.16 m ²
CHAMBRE 2	11.10 m ²
DEGT.	1.13 m ²
PIECE DE VIE	24.36 m ²
PL	0.50 m ²
PL TECH.	0.80 m ²
SALLE D'EAU	4.60 m ²
TOTAL SURFACES	53.65 m²

TERRASSE	8.11 m ²
SURF. TERRAIN ARRIERE	50.20 m ²

REZ-DE-CHAUSSEE