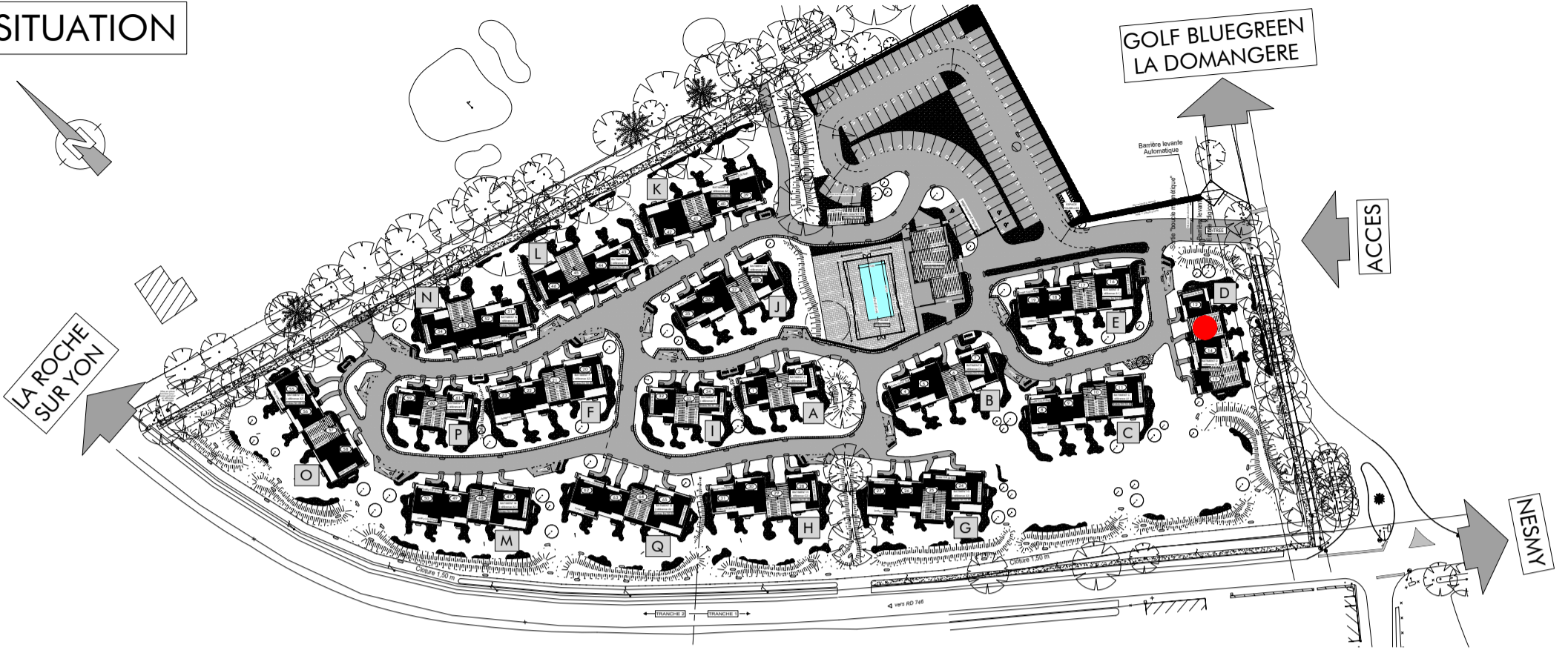
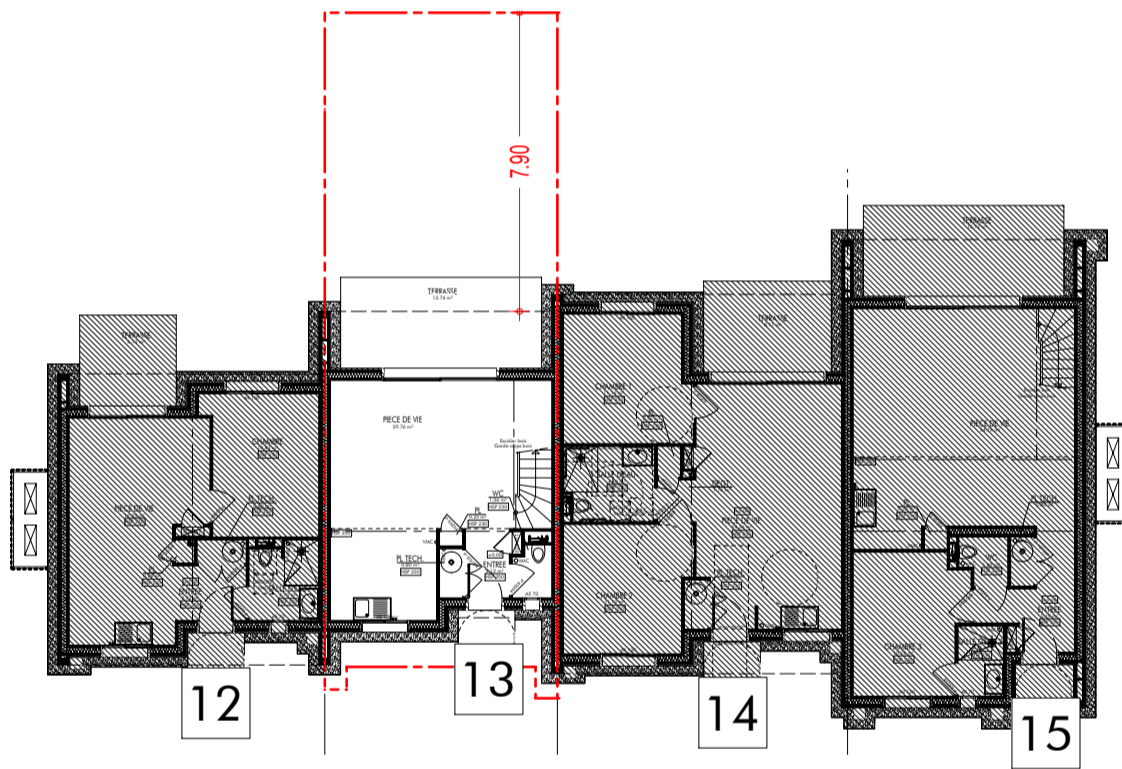
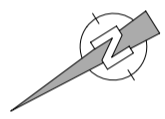


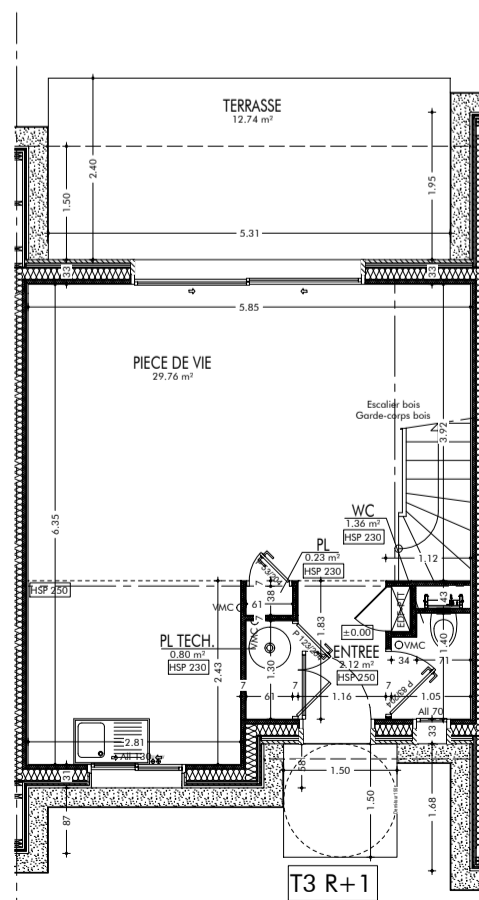
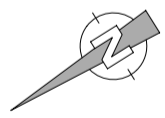
SITUATION



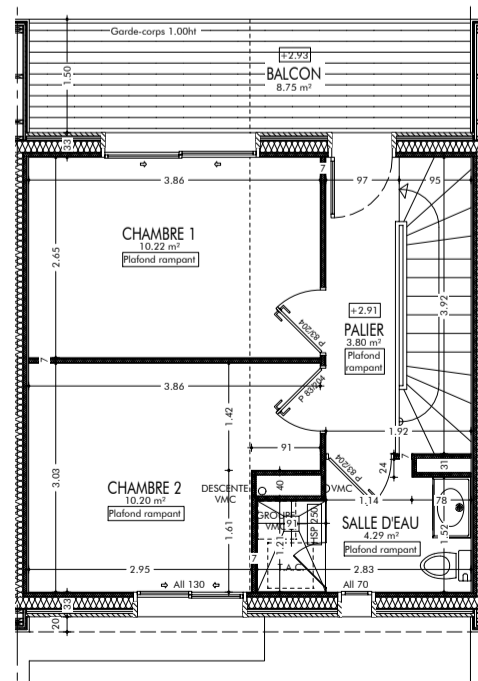
BATIMENT D



PLAN



REZ-DE-CHAUSSEE



ETAGE

SURFACES - T3 R+1	
PIECES	SURFACES
ENTREE	2.12 m²
PIECE DE VIE	29.76 m²
PL	0.23 m²
PL TECH.	0.80 m²
WC	1.36 m²
TOTAL RDC	34.27 m²
CHAMBRE 1	10.22 m²
CHAMBRE 2	10.20 m²
PALIER	3.80 m²
SALLE D'EAU	4.29 m²
TOTAL R+1	28.51 m²
TOTAL SURFACES	62.78 m²

TERRASSE	12.74 m²
BALCON	8.75 m²
SURF. TERRAIN ARRIERE	43.40 m²