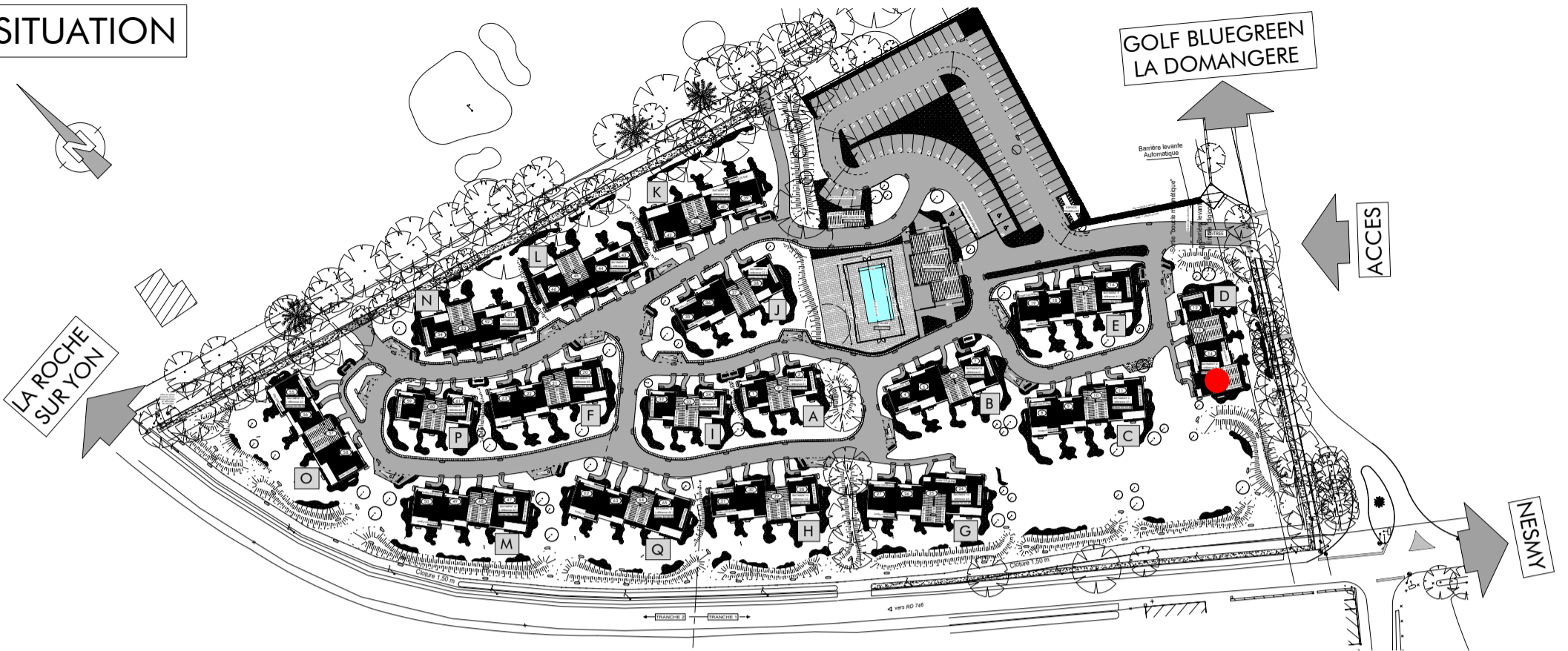
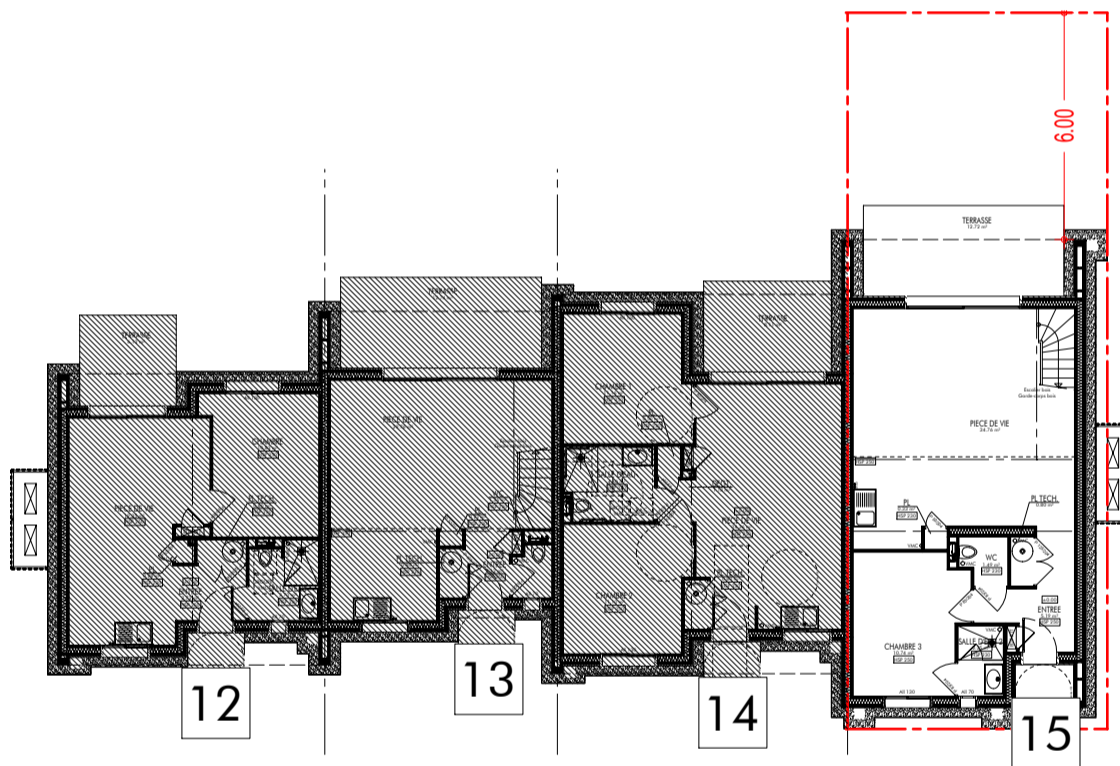
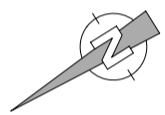


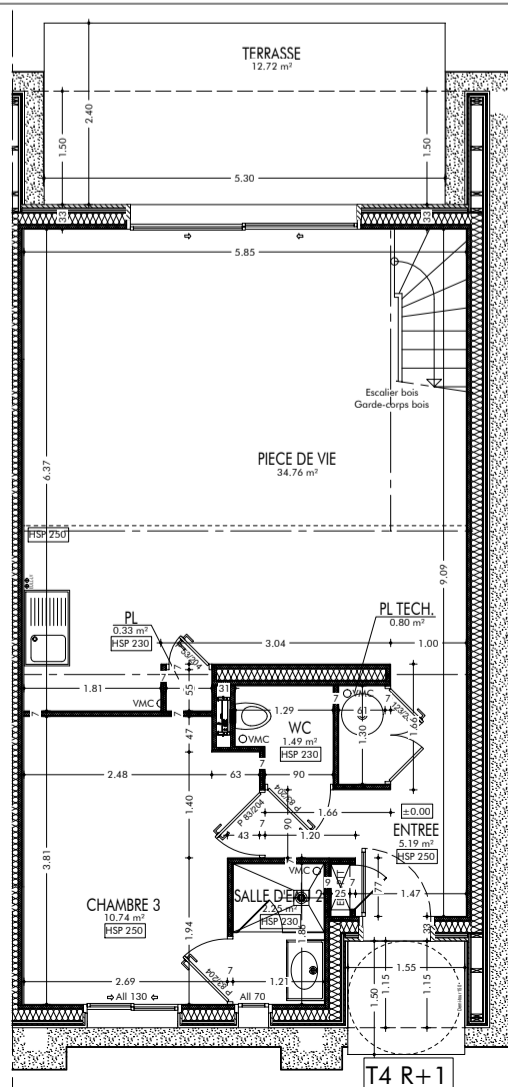
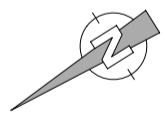
SITUATION



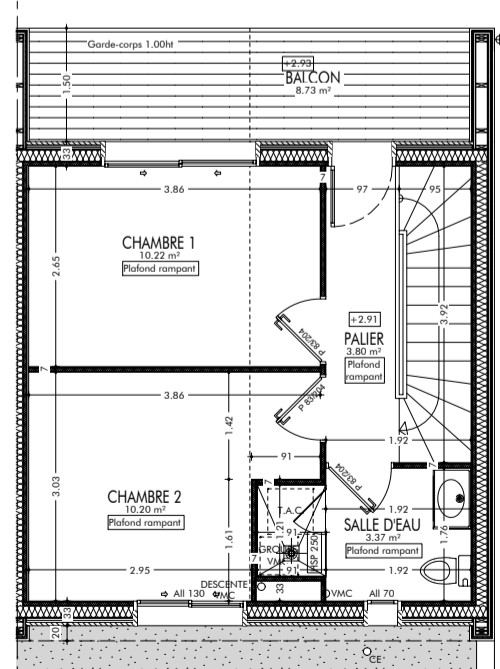
BATIMENT D



PLAN



REZ-DE-CHAUSSEE



ETAGE

SURFACES - T4 R+1	
PIECES	SURFACES
CHAMBRE 3	10.74 m ²
ENTREE	5.19 m ²
PIECE DE VIE	34.76 m ²
PL	0.33 m ²
PL TECH.	0.80 m ²
SALLE D'EAU 2	2.25 m ²
WC	1.49 m ²
TOTAL RDC	55.56 m²
CHAMBRE 1	10.22 m ²
CHAMBRE 2	10.20 m ²
PALIER	3.80 m ²
SALLE D'EAU	3.37 m ²
TOTAL R+1	27.59 m²
TOTAL SURFACES	83.15 m²

TERRASSE	12.72 m ²
BALCON	8.73 m ²
SURF. TERRAIN ARRIERE	36.00 m²