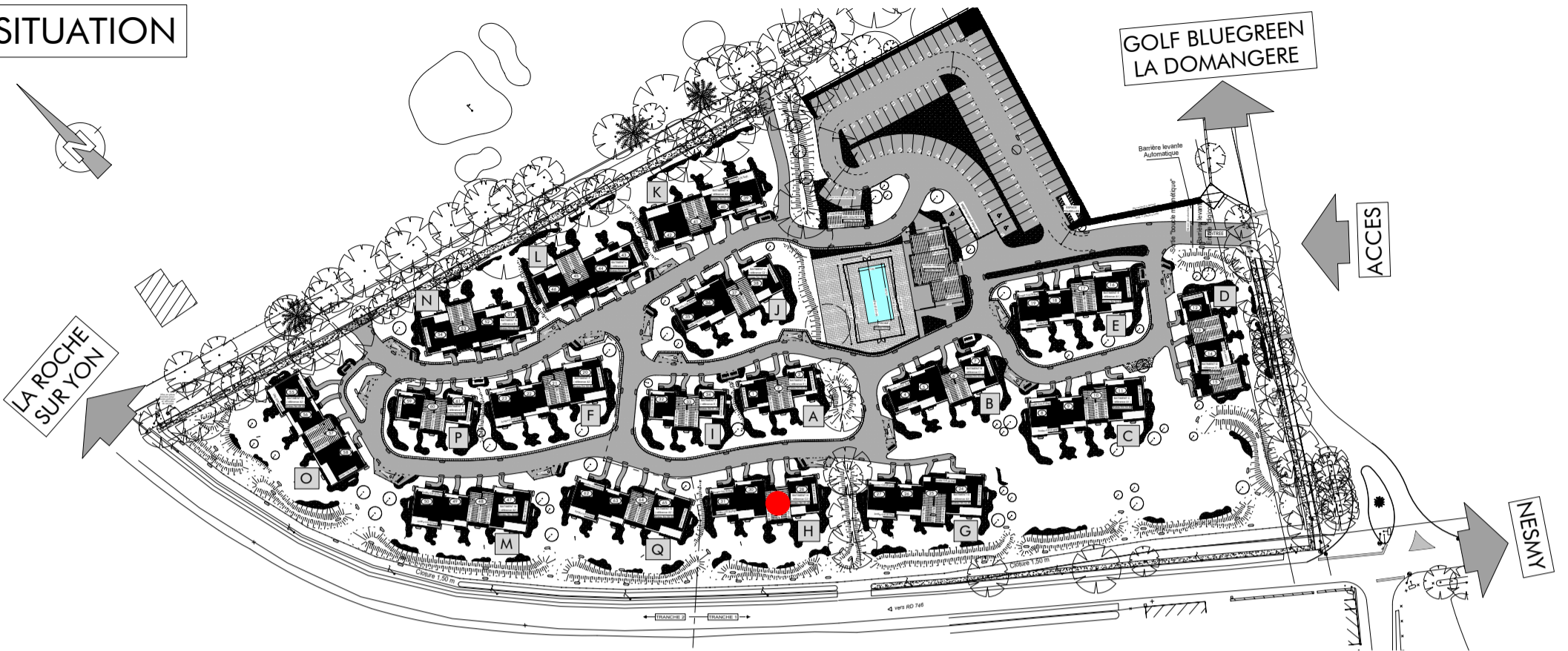
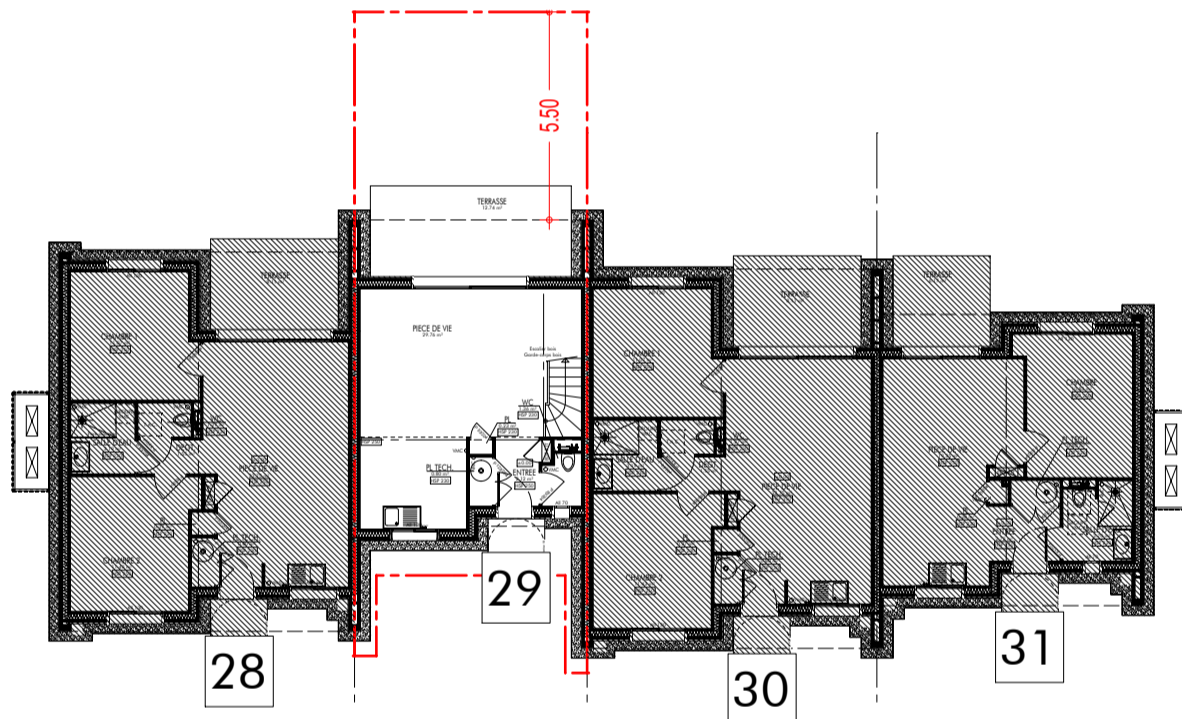


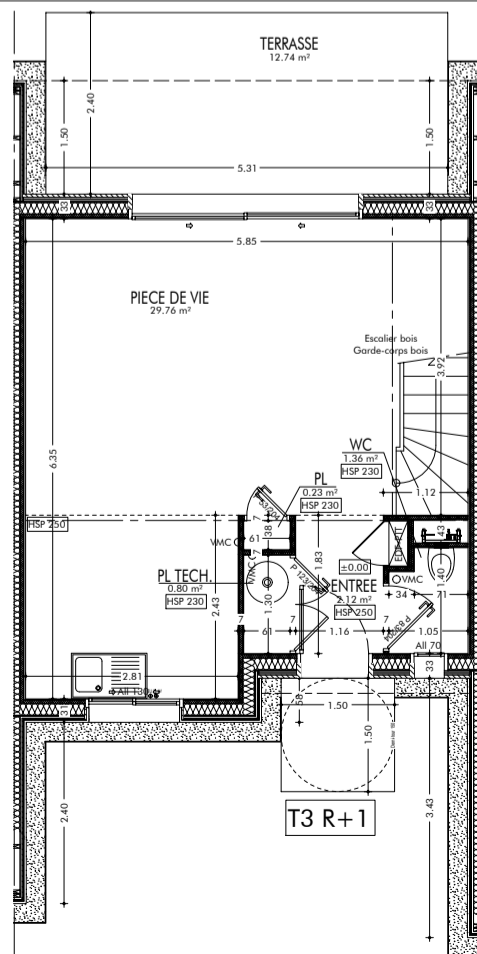
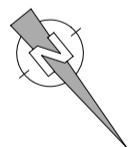
SITUATION



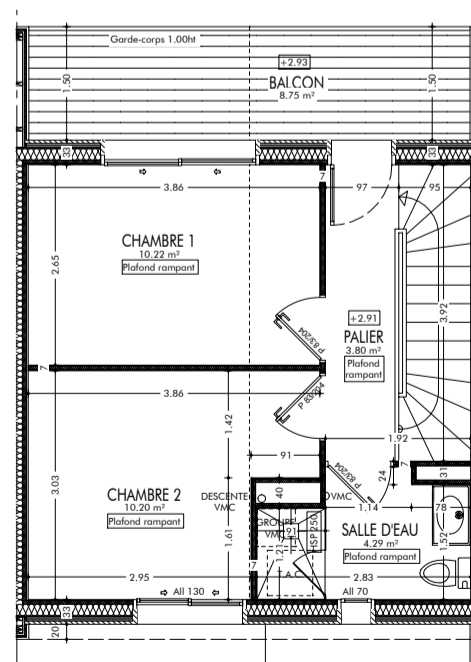
BATIMENT H



PLAN



REZ-DE-CHAUSSEE



ETAGE

SURFACES - T3 R+1	
PIECES	SURFACES
ENTREE	2.12 m ²
PIECE DE VIE	29.76 m ²
PL	0.23 m ²
PL TECH.	0.80 m ²
WC	1.36 m ²
TOTAL RDC	34.27 m²
CHAMBRE 1	10.22 m ²
CHAMBRE 2	10.20 m ²
PALIER	3.80 m ²
SALLE D'EAU	4.29 m ²
TOTAL R+1	28.51 m²
TOTAL SURFACES	62.78 m²

TERRASSE	12.74 m ²
BALCON	8.75 m ²
SURF. TERRAIN ARRIERE	28.80 m ²