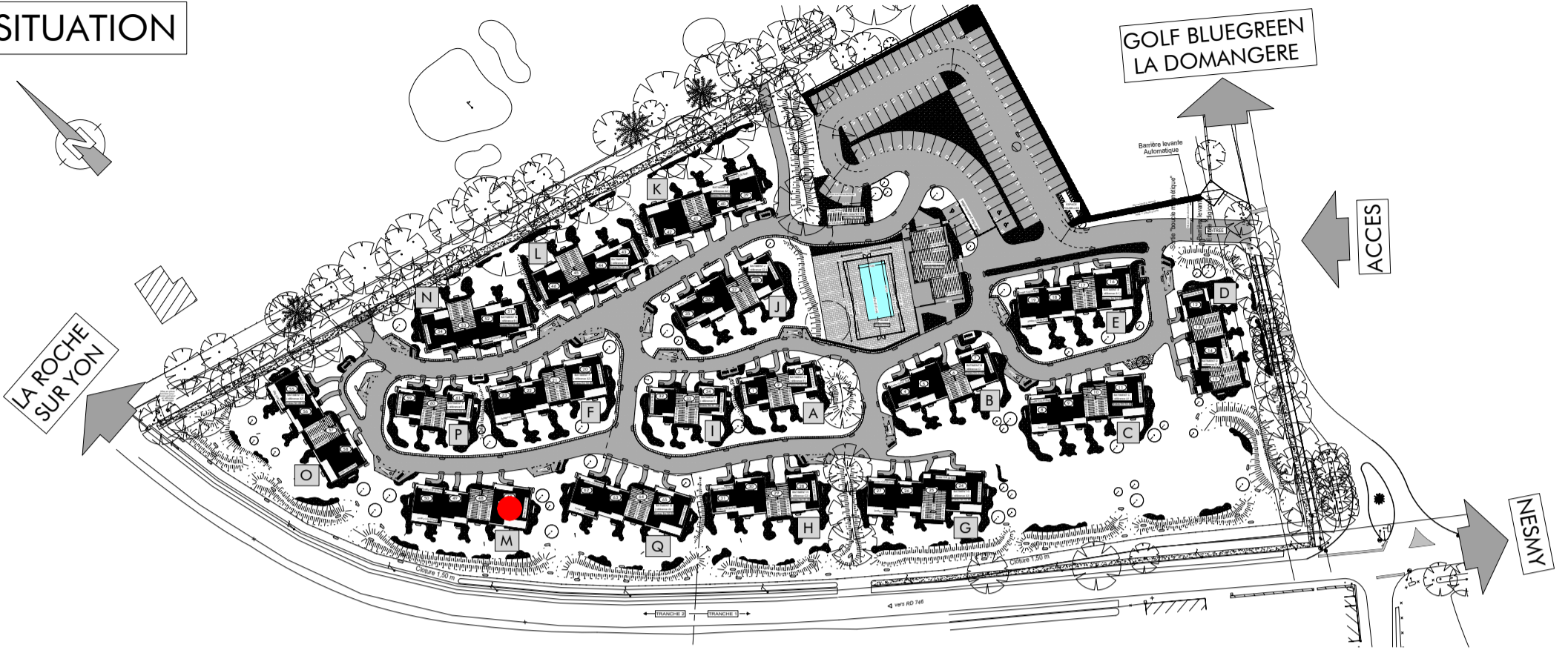
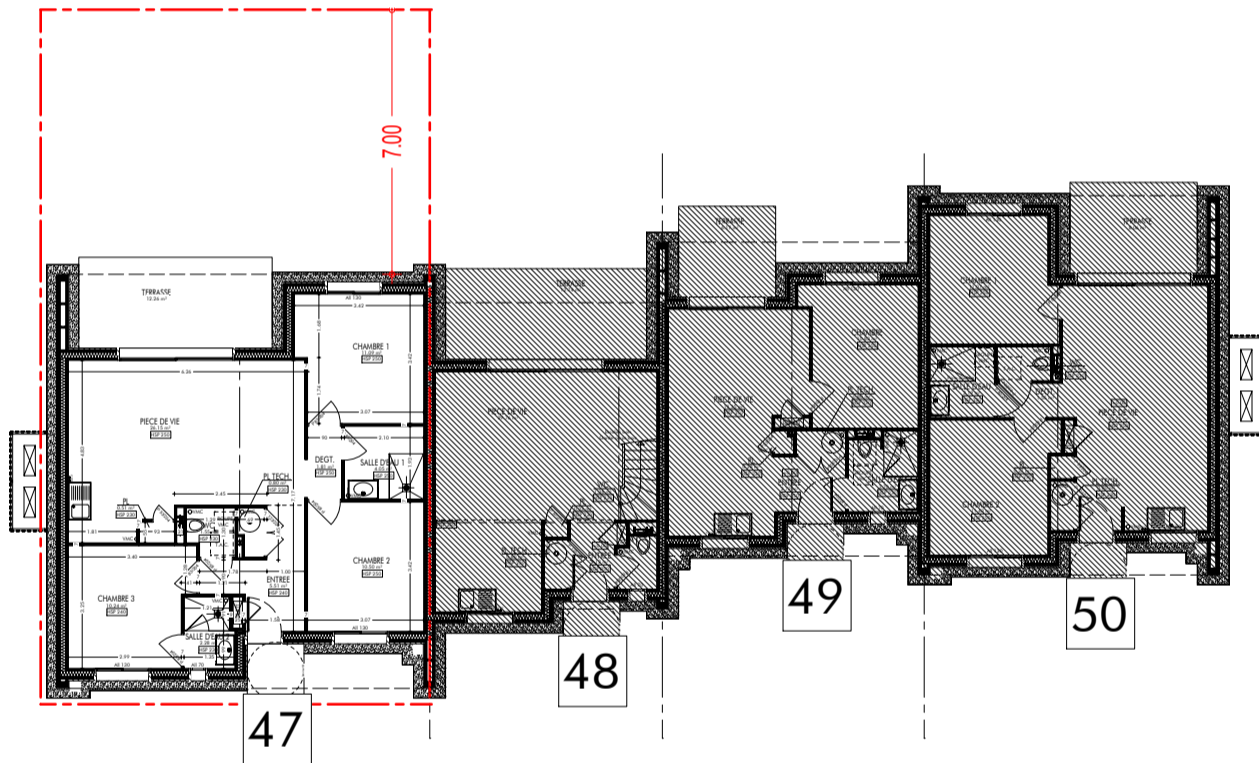
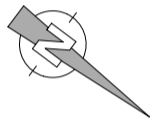


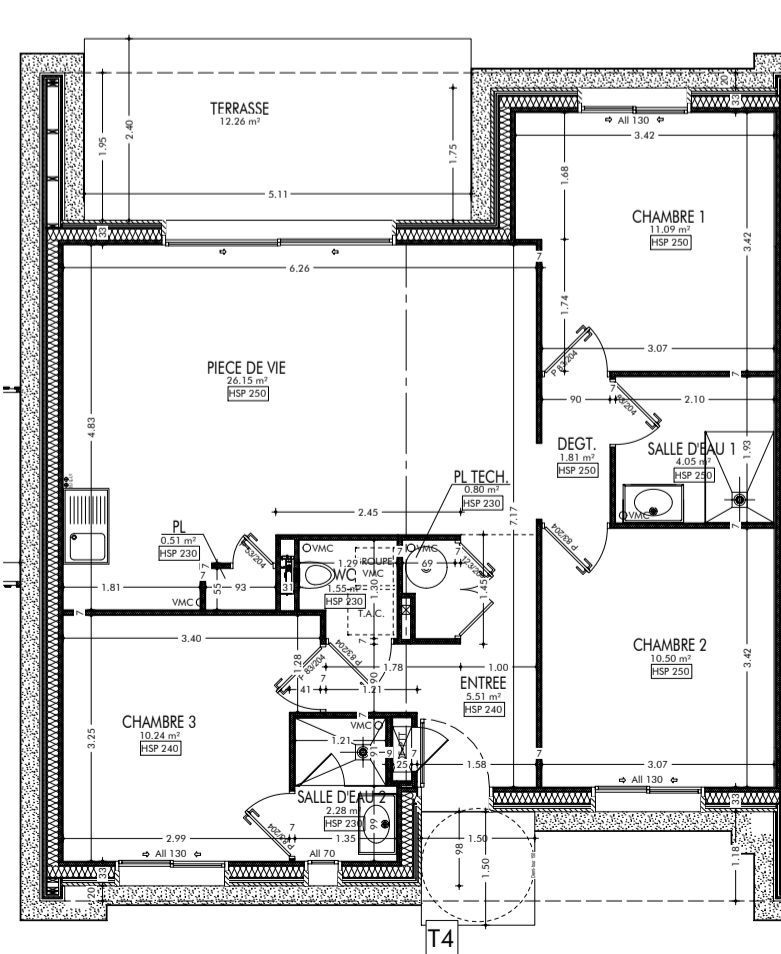
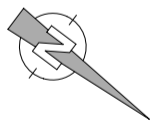
SITUATION



BATIMENT M



PLAN



REZ-DE-CHAUSSEE

SURFACES - T4	
PIECES	SURFACES
CHAMBRE 1	11.09 m ²
CHAMBRE 2	10.50 m ²
CHAMBRE 3	10.24 m ²
DEGT.	1.81 m ²
ENTREE	5.51 m ²
PIECE DE VIE	26.15 m ²
PL	0.51 m ²
PL TECH.	0.80 m ²
SALLE D'EAU 1	4.05 m ²
SALLE D'EAU 2	2.28 m ²
WC	1.55 m ²
TOTAL SURFACES	74.49 m²

TERRASSE	12.26 m ²
SURF. TERRAIN ARRIERE	69.10 m ²