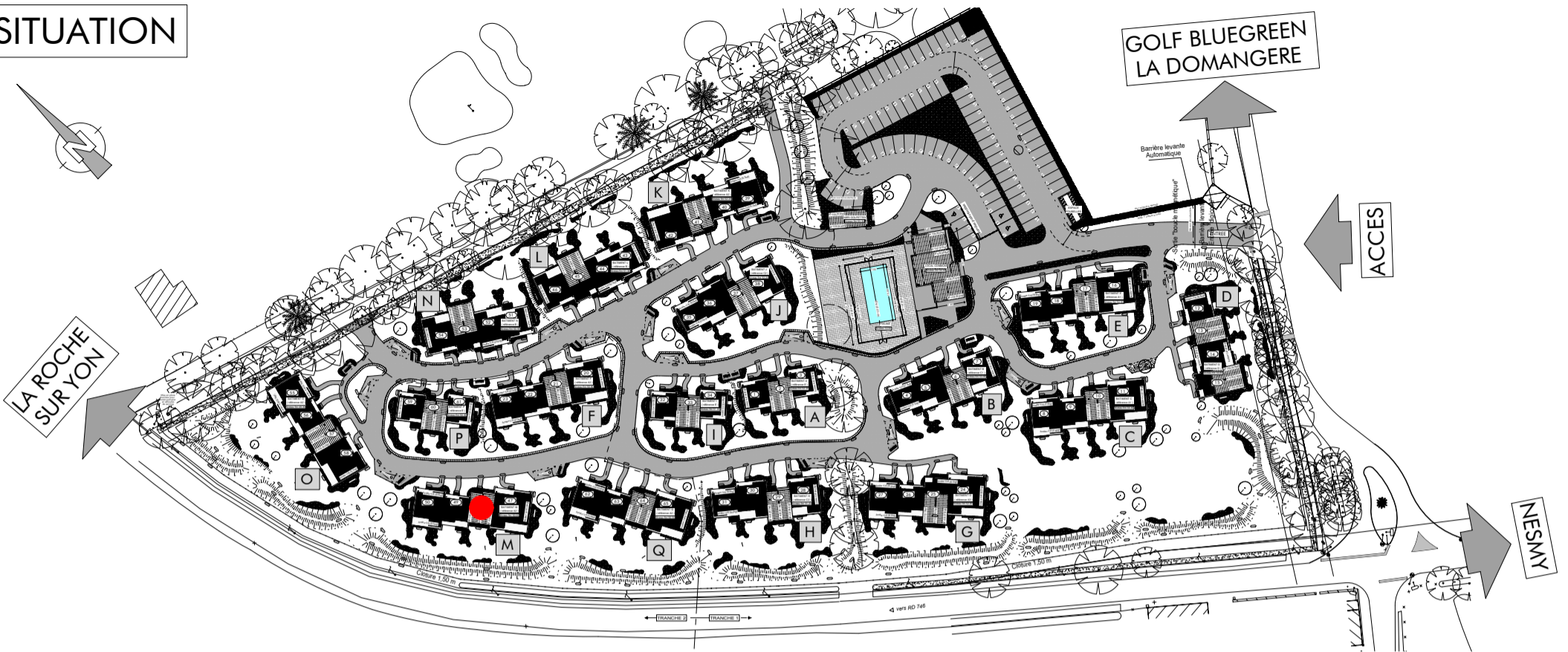
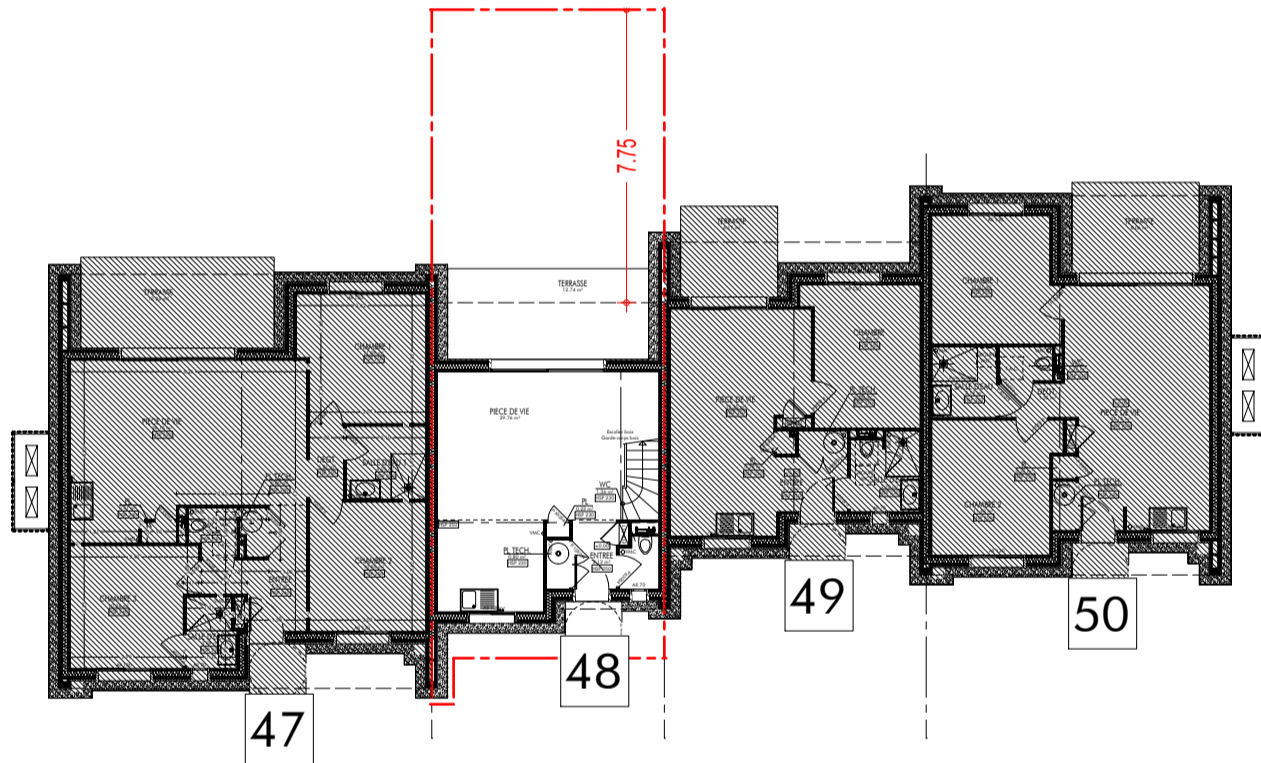
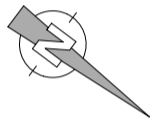


BATIMENT M - LOGEMENT N°48 - T3 R+1

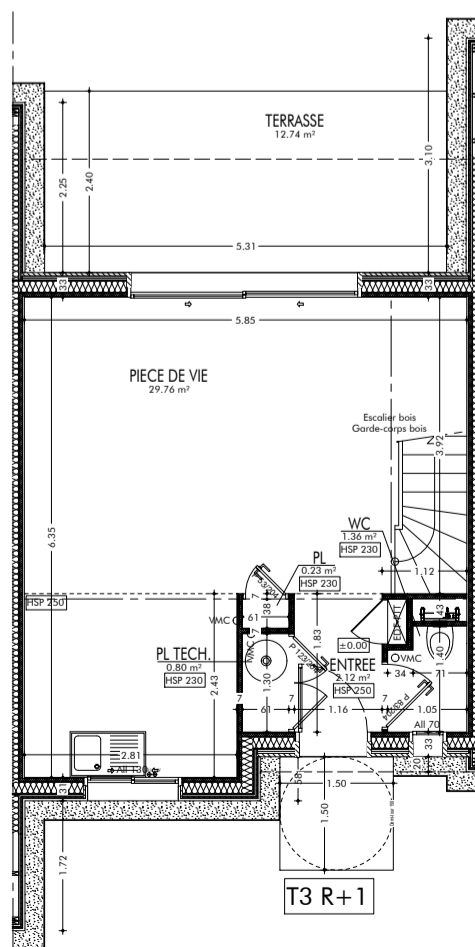
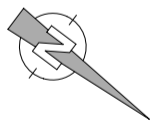
SITUATION



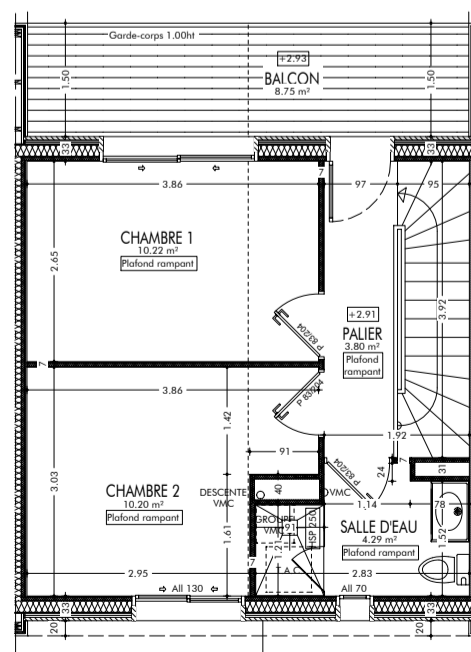
BATIMENT M



PLAN



REZ-DE-CHAUSSEE



ETAGE

| SURFACES - T3 R+1 | |
|-------------------|----------|
| PIECES | SURFACES |
| ENTREE | 2.12 m² |
| PIECE DE VIE | 29.76 m² |
| PL | 0.23 m² |
| PL TECH. | 0.80 m² |
| WC | 1.36 m² |
| TOTAL RDC | 34.27 m² |
| CHAMBRE 1 | 10.22 m² |
| CHAMBRE 2 | 10.20 m² |
| PALIER | 3.80 m² |
| SALLE D'EAU | 4.29 m² |
| TOTAL R+1 | 28.51 m² |
| TOTAL SURFACES | 62.78 m² |

| | |
|-----------------------|----------|
| TERRASSE | 12.74 m² |
| BALCON | 8.75 m² |
| SURF. TERRAIN ARRIERE | 41.60 m² |