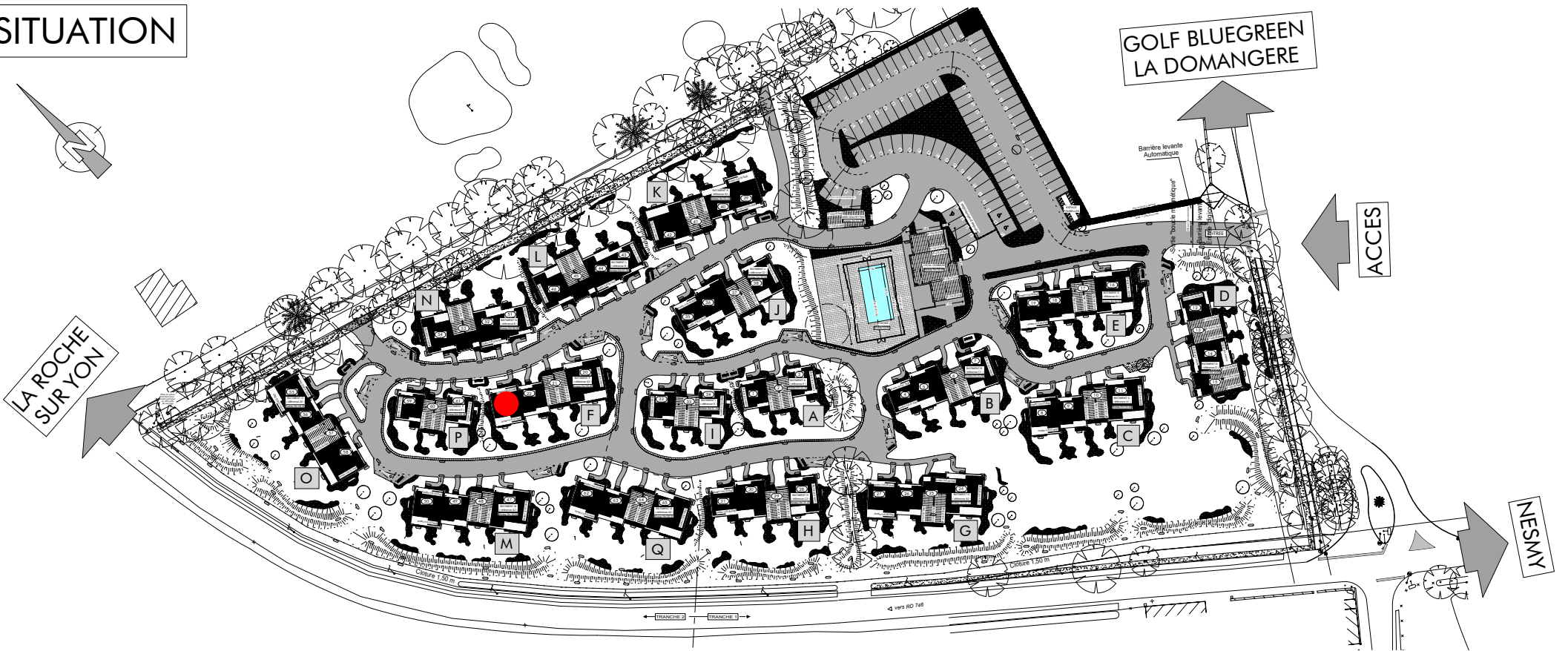
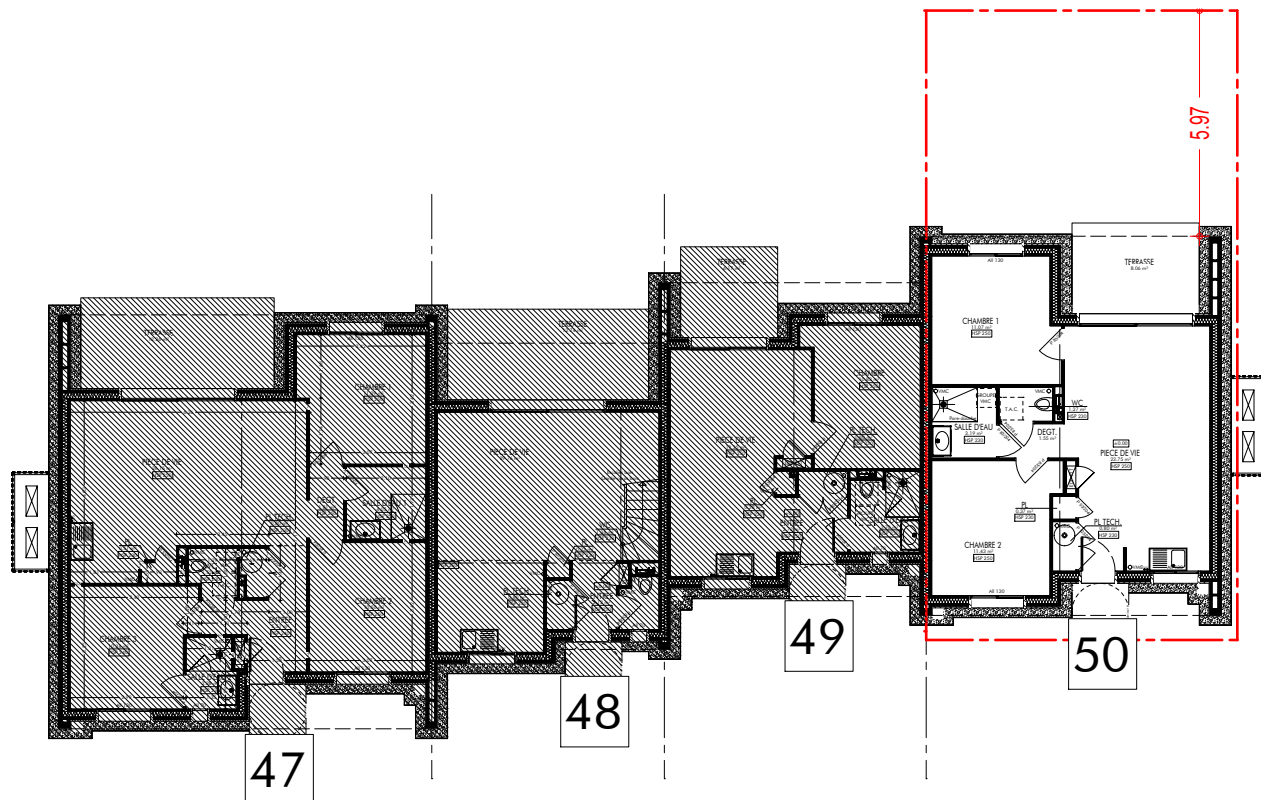
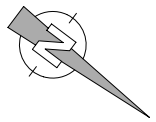


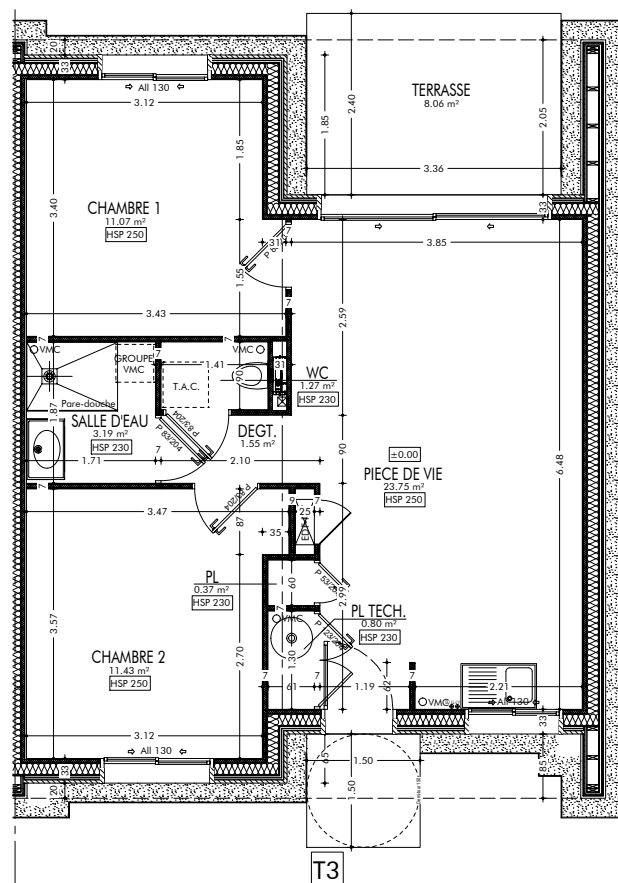
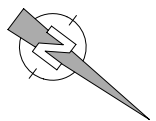
SITUATION



BATIMENT M



PLAN



REZ-DE-CHAUSSEE

SURFACES - T3	
PIECES	SURFACES
CHAMBRE 1	11.07 m ²
CHAMBRE 2	11.43 m ²
DEGT.	1.55 m ²
PIECE DE VIE	23.75 m ²
PL	0.37 m ²
PL TECH.	0.80 m ²
SALLE D'EAU	3.19 m ²
WC	1.27 m ²
TOTAL SURFACES	53.43 m²

TERRASSE	8.06 m ²
SURF. TERRAIN ARRIERE	47.30 m ²